

RETAILERS BUYING GUIDE TO SHOP SHELVING

CONTENTS

	Page
Glossary of Shelving Terminology _____	2
Shelving Bays Explained _____	5
How should I draw my plan? _____	6
Tegometall Shelving Sizes _____	7
Additional Shop Store Products _____	9

GLOSSARY OF SHELVING TERMINOLOGY

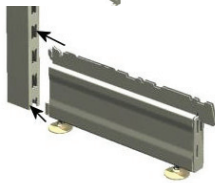


Back Panel:



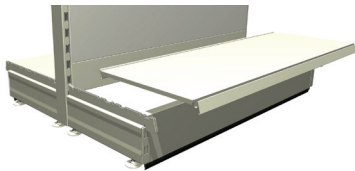
The metal sheet that clips into the upright and forms the skeleton of your bay, providing stability and rigidity. It can be plain or perforated / slatted to hang a variety of hooks on which to merchandise product.

Base Leg:



Sometimes referred to as the foot or the base foot. This is also an integral component, and forms the depth of the bay. It hooks to the upright and sits on the floor. A shelf plank is put on top of it to form the base shelf.

Base Shelf:

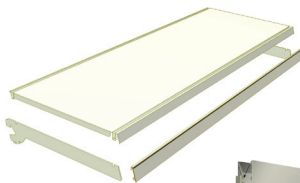


The shelf that sits on the base legs. This a merchandisable shelf, but also provides the bay with stability and rigidity. No shelf brackets are required on the base shelf as the plank sits on the base legs.

Complete Bay:

Usually used to describe a bay of shelving that stands alone, i.e. has 2 uprights and 2 base legs to itself (on a wall or EPU).

Complete Shelf:



A shelf that consists of a pair of shelf brackets, a shelf plank and EPOS

Double Back Panelled:



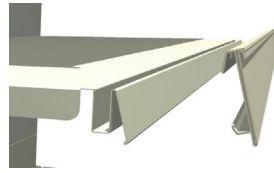
As per the single sided gondola bay, when the rear of a bay is visible back panels can be added to the rear (to the floor if necessary) to make it neater

End Set:



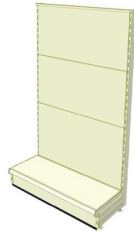
An upright and a base leg which finishes off a run of shelving. An upright with 2 base legs would finish off a run on a double sided gondola

EPOS Ticket Rail:



The plastic strip that clips to the front of your shelf. Pricing tabs are placed in here in front of the products on the shelf for customer information.

EPU (End Promotional Unit):



Sometimes referred to as a Gondola End Bay. It is a complete bay that sits at the end of your gondola run. These are feature bays often used for promotions and special offers. As the bay may be visible at the rear, they are usually double back panelled.

Gondola Bay:

Gondola bays are central shelves (as oppose to wall shelves) that form the aisles in your store.

Gondola – Double Sided:

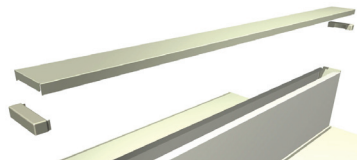


This forms 2 aisles in the store, and has a bay of shelving back to back. A running gondola bay has 1 upright and 2 base legs.

Gondola – Single Sided:

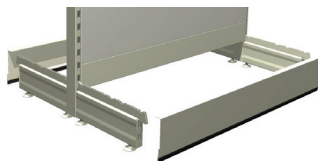
Used when a double sided bay will not fit, or against a column. As there is not another bay behind a single sided bay may require back panels to the rear to make it neater. Gondola bays are usually a lower level than the wall to allow visual access around the store from the counter.

Gondola Top Cover:



Finishes the bay of shelving at the top, and sits on top of the uprights. Also used on EPU's and Window Bays.

Kicker Panel or Plinth:



The panel that clips into the base leg, and covers the gap under the bay that the base legs form. This forms part of the trim. This is always the same width as the bay of shelving.

Profile:

The height, depth, width, back panel and shelf configuration form the bay's profile. A profile drawing is shown in the buying guide, and can be a simple line drawing of the bay indicating all the above features.

Running Bay:



A bay of shelving consisting of 1 upright and 1 base leg. It either shares the upright and base leg of the bay next to it, or has an end set to finish off the run. A running bay on a double sided gondola would consist of 1 upright and 2 base legs.

Skeleton Bay:



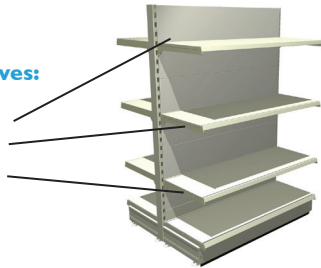
A bay of shelving that has no upper shelves. Usually used when Kleerex shelving is being used – i.e. for News or Magazine Display.

Trim:



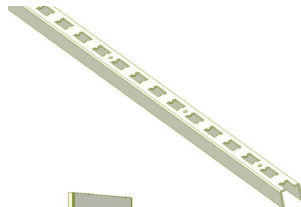
EPOS ticket price rail and Kicker Panels. These can be a different colour to the rest of the bay i.e. Jura White Shelving with Red Ticket strip and red kicker panel.

Upper Shelves:



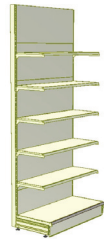
These shelves utilise shelf brackets which hook into the upright. They can be any depth (but not exceeding the depth of the base shelf). A mixture of different shelf depths are often used to create a better shopping experience with the deeper shelves normally sitting at the bottom and the shallower shelves at the top.

Upright:



The upright is an integral component in the bay of shelving. It is used to form the vertical structure of the bay, and back panels and shelf planks are attached to it. It is used in every bay of shelving.

Wall Bay:



Wall shelving that sits against the perimeter wall of your retail area.

Window Bay:

Bay of shelving that sits in the window. Usually lower level than the gondola. These bays are normally double back panelled so that the bay looks neat from the pavement.

SHELVING BAYS EXPLAINED

Running Bay:

A **Running Bay** is a bay of shelving complete with back panels and shelves, sometimes referred to as an 'add-on' bay. Every running bay has just one **Upright** and one **Base Leg** and therefore needs another running bay or an **End Set** to make it a **Complete Bay**. When a complete bay contains more than one running bay, each running bay shares the upright and the base leg of the bay next to it.

In the following diagram you have 4 running bays and 1 end set:

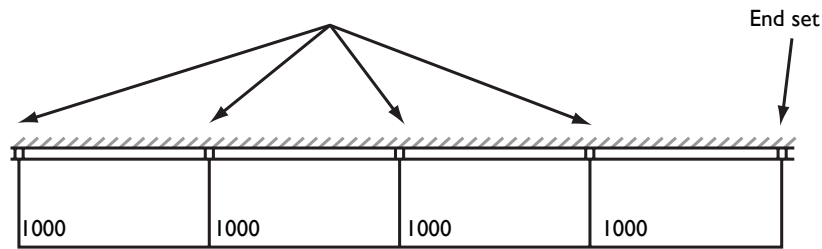


Diagram 1: running bays & end sets

i.e. four bays of merchandised shelving. In order to complete this run of shelving you would need an end set

Gondola:

Gondola bays are central shelves (as oppose to wall shelves) form the aisles in your store. A running gondola bay has 1 upright and 2 base legs.

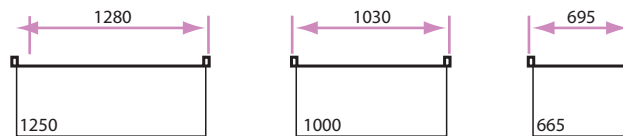
End Set:

An end set consists of an upright and a base. This finishes off a run of shelving. You could split the above diagram up to form two runs of shelving by adding another end set.

See our glossary at the foot of this document for a full list of shelving terminology

How do I know if a bay will fit in my space?

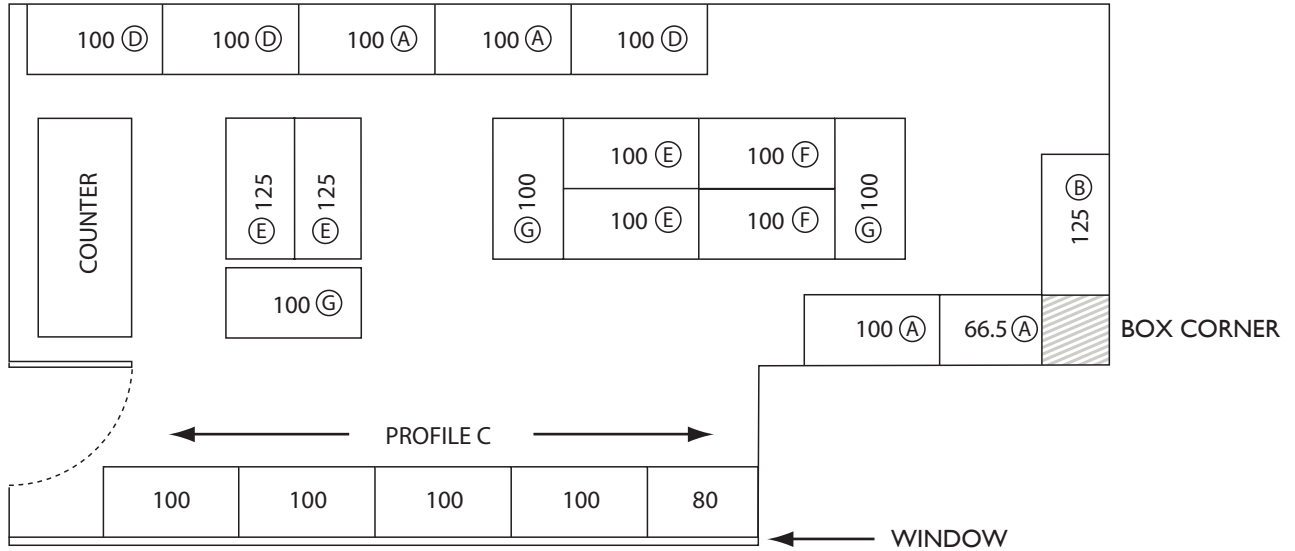
When determining what bays will fit in your space, you need to add 15mm to each end of the run, see below



Therefore, diagram 1 becomes 4030mm in total

HOW SHOULD I DRAW MY PLAN?

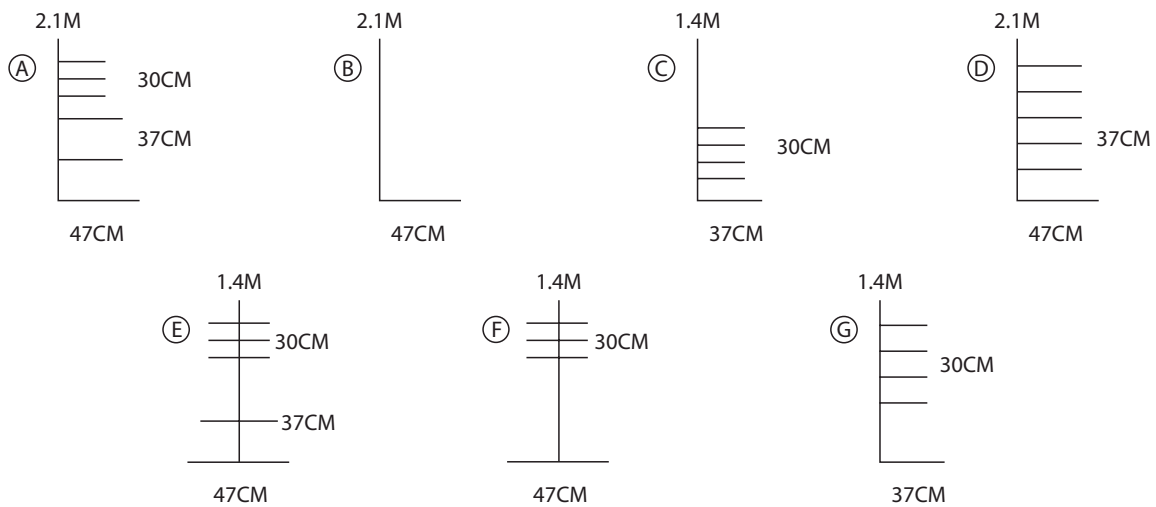
In order to detail where you are going to put your bays, why not do a sketch, or send us a copy of the plan? In case you have never drawn a plan before, this is how it should basically look:



This helps us to determine how many running bays you need, and where your end sets are required.

Profile Drawings:

You can help communicate your bay requirements also, by using something similar to this:



TEGOMETALL SHELVING SIZES



Bay Widths:

Tegometall bays are supplied in the following standard widths: 66.5cm, 80cm, 100cm and 125cm

Bay Heights:

- Bays are available in the following heights and colours (see table to the right).
- Standard wall heights are 201cm to 241cm.
- We recommend the 211cm height as a cost effective solution.

Height	SILVER	JURA WHITE
141cm	✓	✓
161cm	✓	✓
181cm	✓	✓
201cm	✓	✓
211cm	✓	✓
221cm	✓	✓
241cm	✓	✓
261cm	✓	✓
281cm	X	✓
301cm	X	✓

Bay Depths:

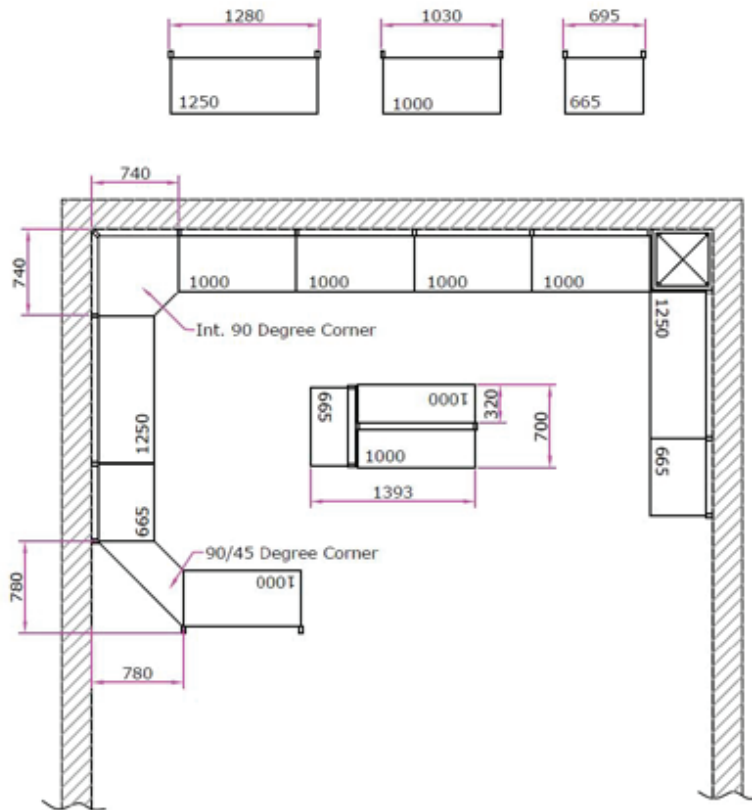
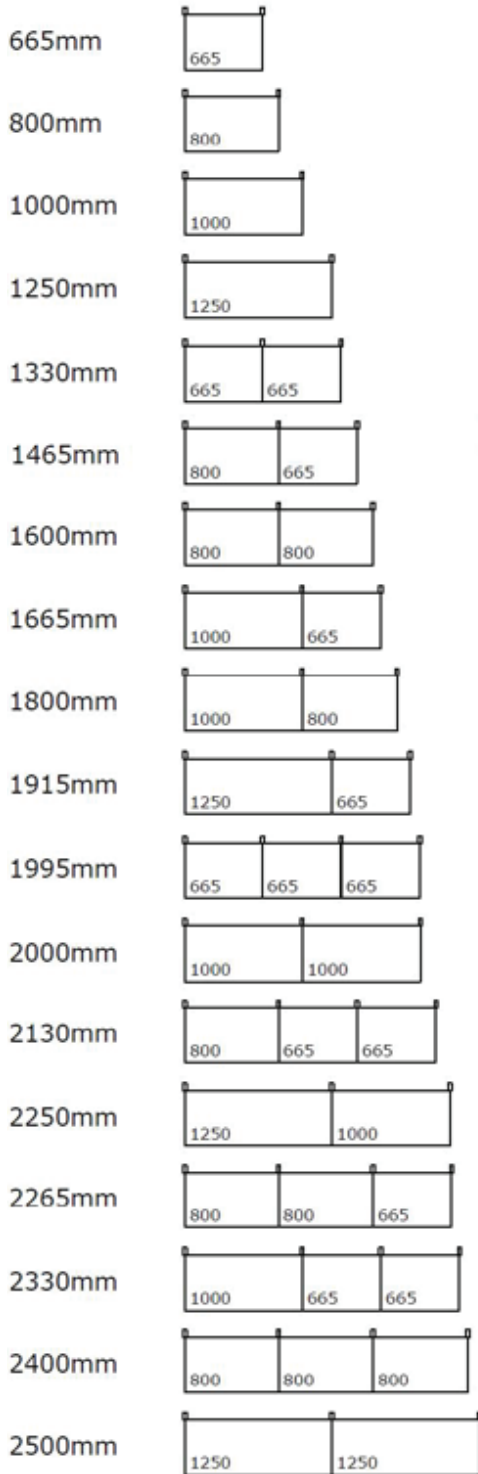
- Bays are available in the following depths and colours (see table to the right).
- Standard depths are 30cm, 37cm and 47cm, and will depend upon the amount of floor space you have available.

Depth	SILVER	JURA WHITE
20cm	✓	✓
30cm	✓	✓
37cm	✓	✓
47cm	✓	✓
57cm	✓	✓
67cm	X	✓
77cm	X	✓

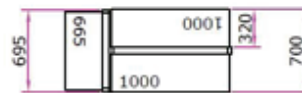
Trim Options:

The EPOS (Ticket edge price rail) and your Kicker Panel can be ordered in the following colours: Silver, Jura White, Red, Blue or Green. You may wish to make your top back panel the same colour also, to make a 'freeze' around the wall

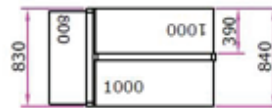
Tegometal Shelving Sizes:



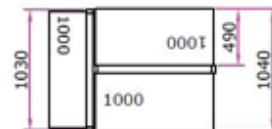
GONDOLA UNIT WITH 300 BASE LEGS



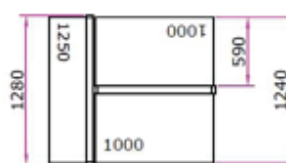
GONDOLA UNIT WITH 370 BASE LEGS



GONDOLA UNIT WITH 470 BASE LEGS



GONDOLA UNIT WITH 570 BASE LEGS



ADDITIONAL SHOP STORE PRODUCTS

The Shop Store also sells

Baskets

- Dump Baskets
- Shopping Baskets
- Wire Shopping Baskets

Kleerex Originals

- Dividers & Risers
- Fruit & Veg Trays
- Flex Pusher System
- Shelving Solutions
- Signage

Slatwall & Pegboard

- Panels
- Hooks & Accessories

Merchandising & Shelving Displays

- Crisps & Confectionery
- Greetings Cards
- Flowers
- Newspapers & Mags
- Wine

POS & Poster Display

- In Store POS
- Pavement Signage
- Poster Frames
- Sign Holders

Safety & Security

- Cash Counters & Security
- Dummy Cameras
- Safes
- Security Mirrors

Sign & Labels

- Doors
- Health & Safety
- Pricing
- Security

Stationery

- Books, Pads & Paper
- Desktop Stationery
- Envelopes
- Filing & Archiving
- Noticeboards
- Writing & Drawing

Store Management & Maintenance

- Business Machines
- Cleaning Products
- Fans & Heaters
- Fire Products
- Health & Safety Products
- Post Room Products